

HAZLETON AREA SCHOOL DISTRICT



PUBLIC PRESENTATION

September 19, 2012



Providing a Client Oriented Approach to Architecture

Crabtree, Rohrbaugh & Associates, Architects

Academy of Sciences

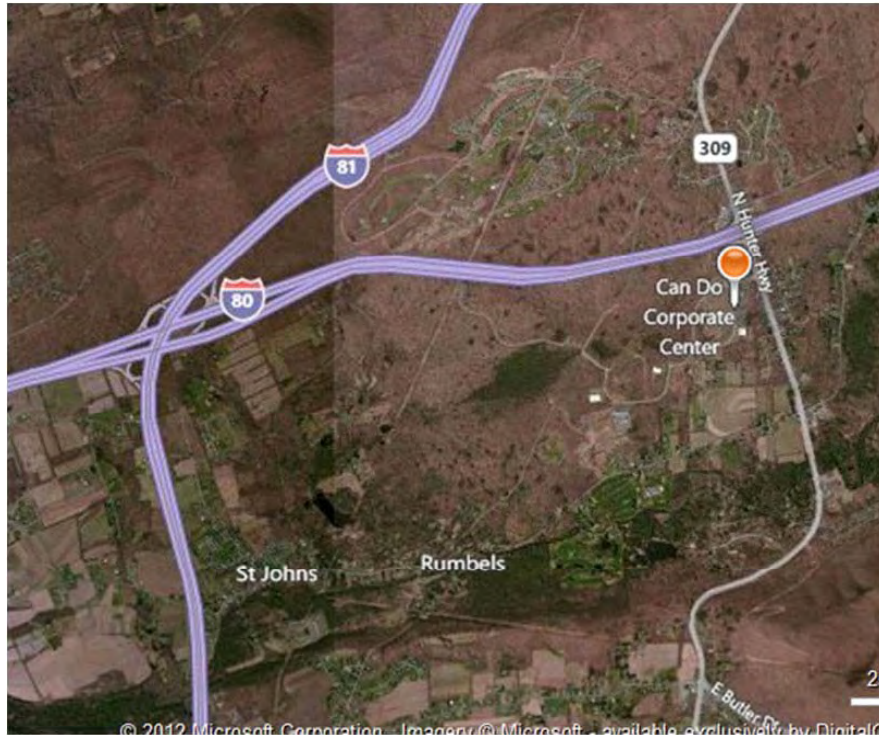


- **55,334 sq. ft. existing building**
- **Approx Student Capacity: 500 students**



Academy of Sciences – Site

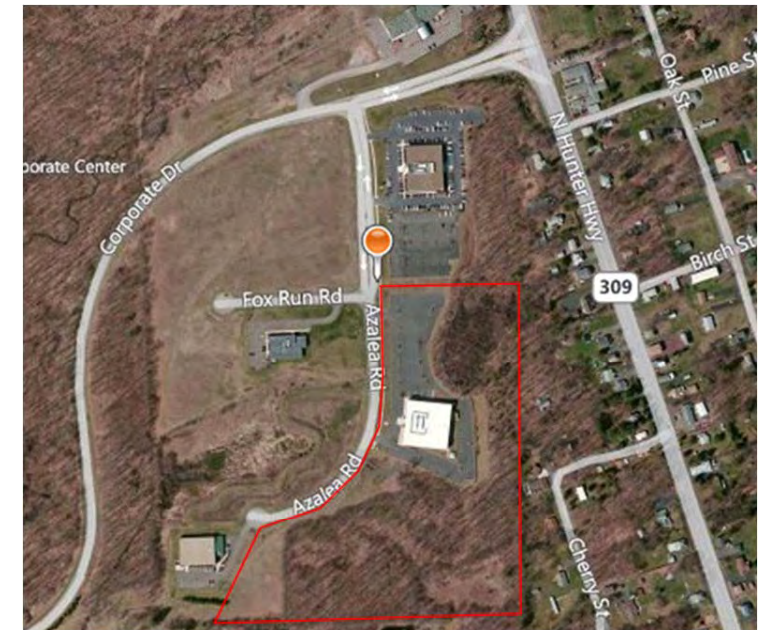
- *The CanDo Corporate Center located near the I80/I81 intersection.*



Site Location Map

- *The District has purchased 19.75 acres of land with an existing spec Office building for development into a STEM Magnet School*

Site Map

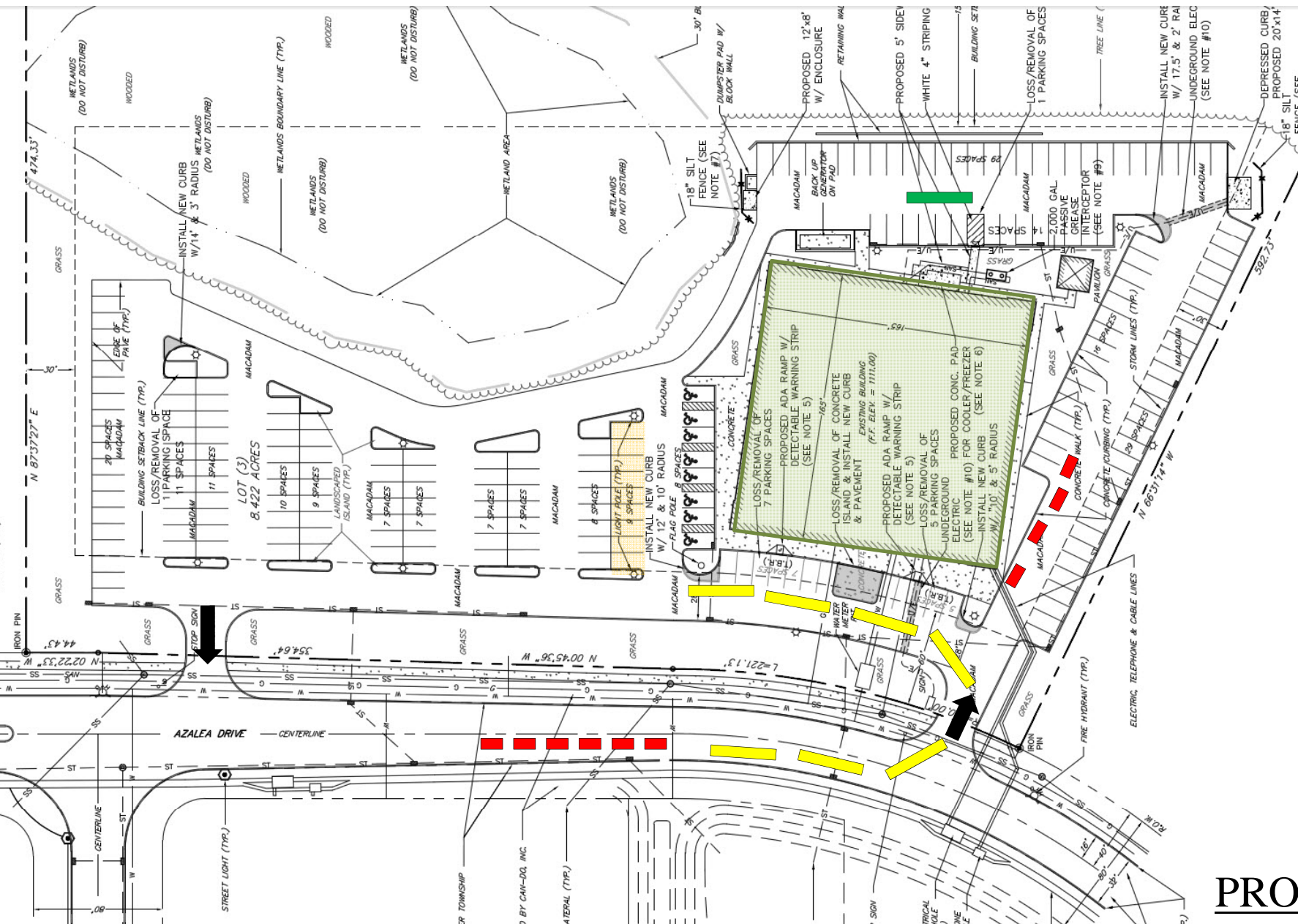




Academy of Sciences

Traffic Patterns:

-  **Bus Drop-Off & Pick-Up**
-  **Car Drop-Off & Pick-Up**
-  **Deliveries**
-  **Visitors**



PROPOSED SITE PLAN

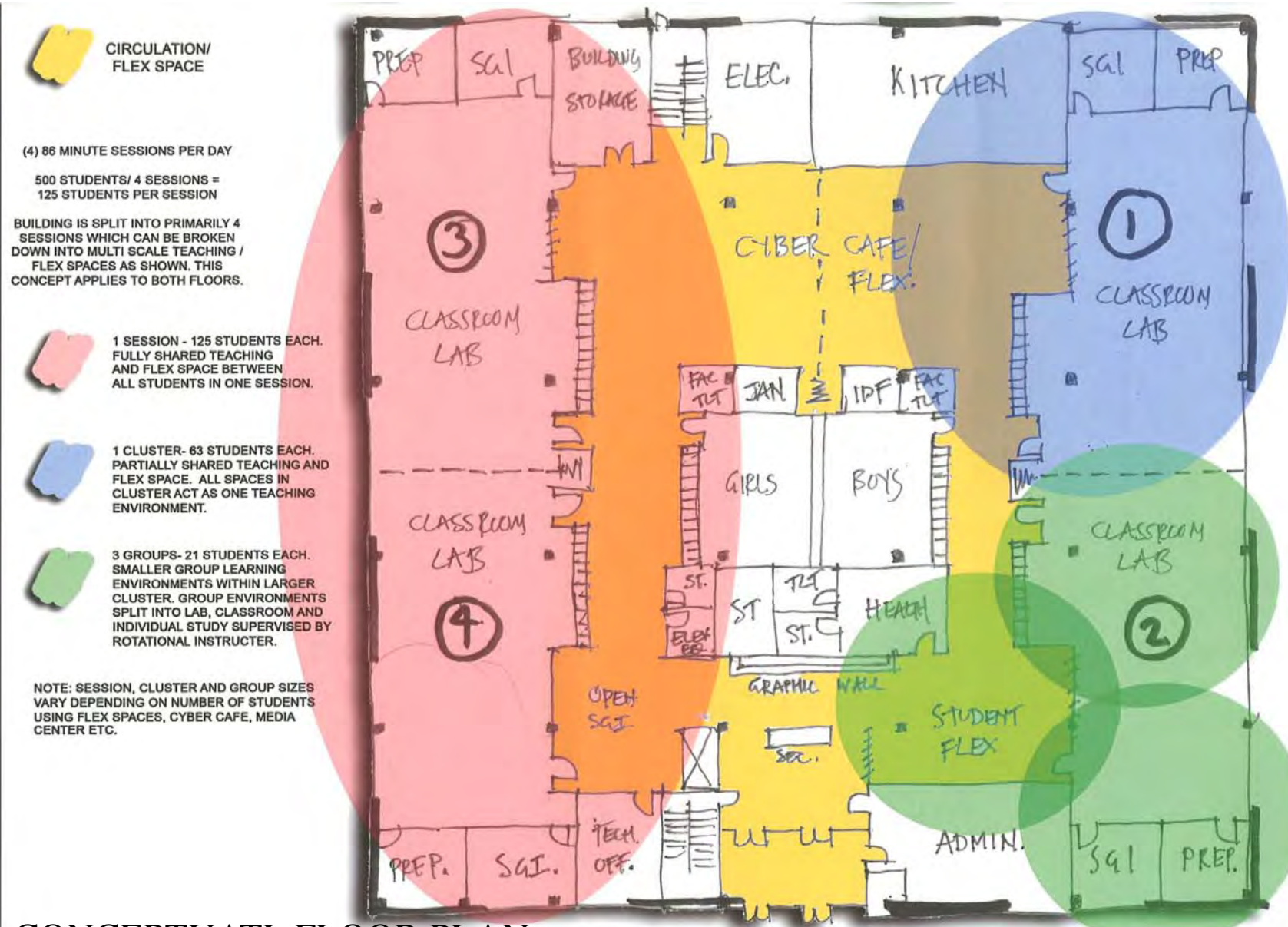




Academy of Sciences

Rotational Model:

- Learning will be problem-based, project based, and integrated between disciplines.
- Instruction using a mixture of online learning, hands-on activities, one-on-one, small and whole group instruction, and research.
- Research projects, job shadowing, co-ops, guest speakers, and science competitions will be integrated into the curriculum.



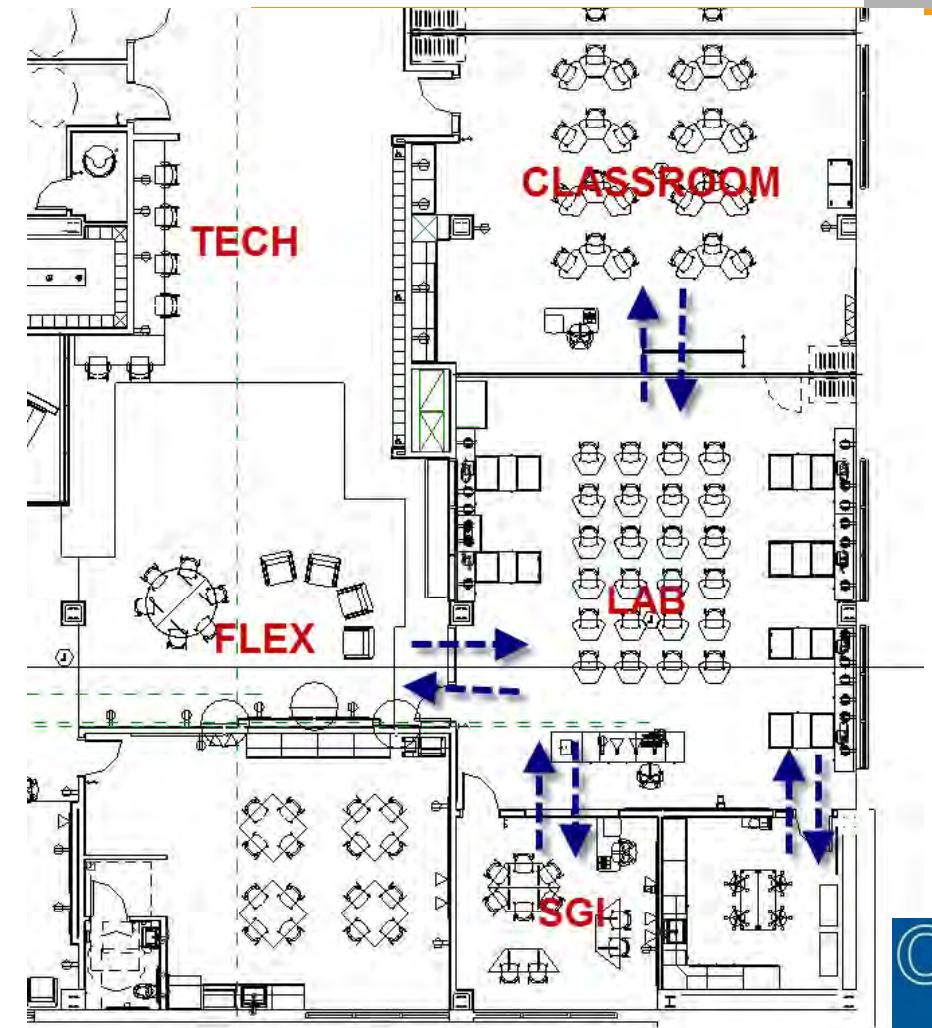
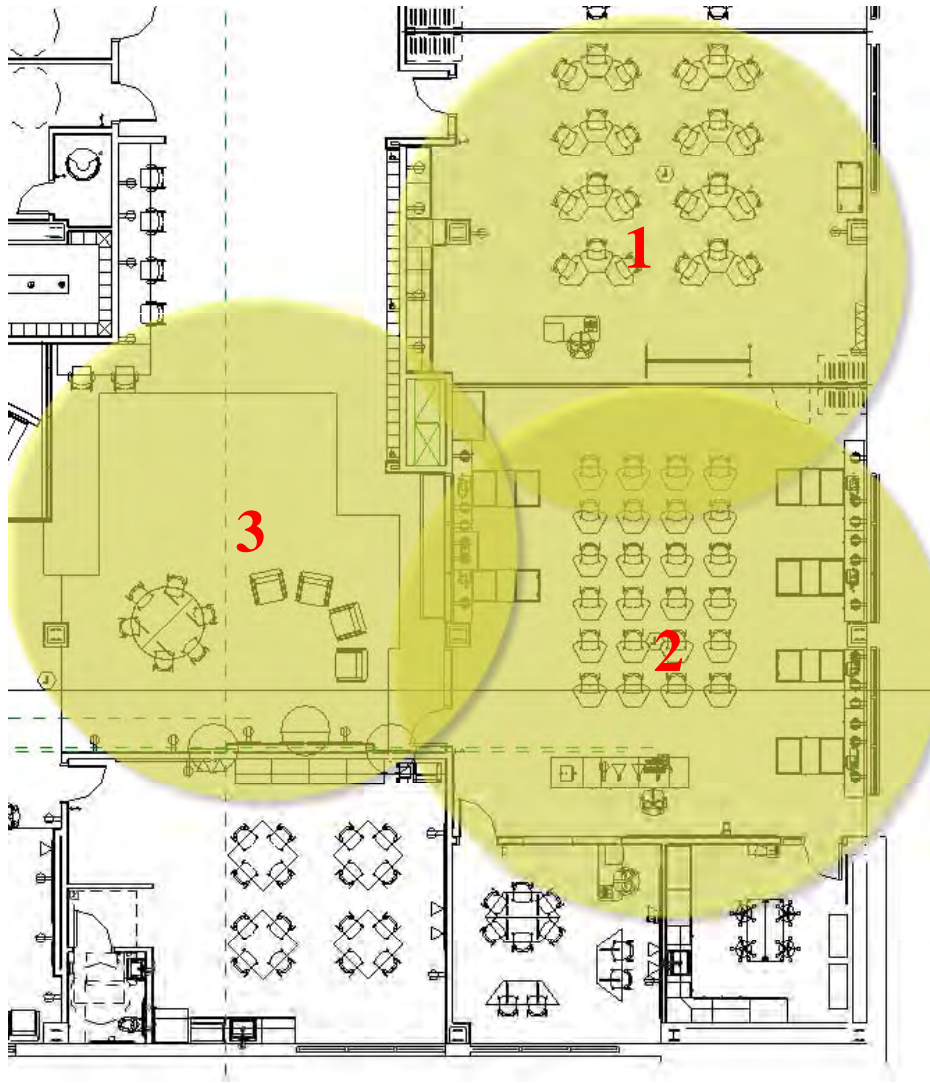
CONCEPTUATL FLOOR PLAN



Academy of Sciences

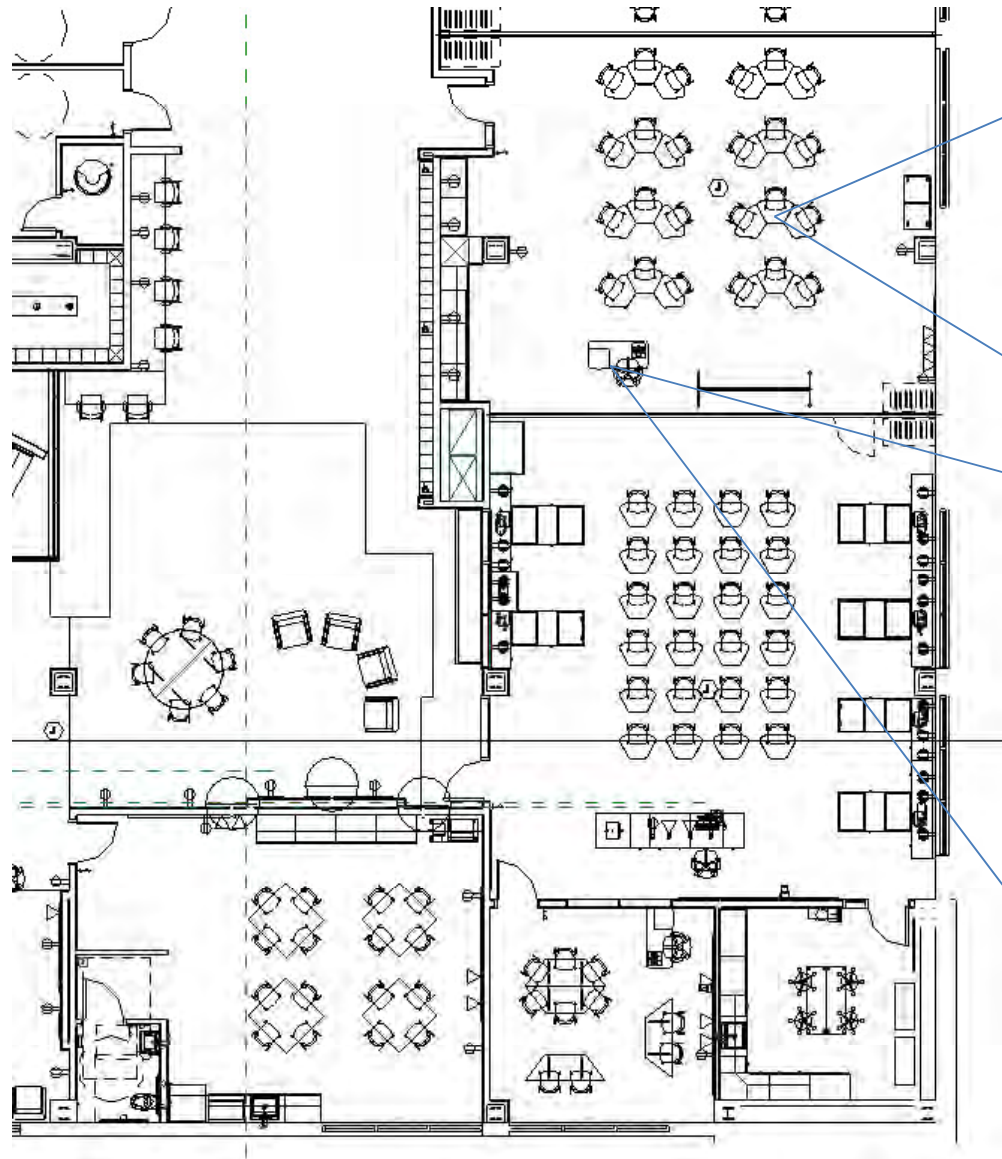
Rotational Model Refined:

- Instruction using a mixture of online learning, hands-on activities, one-on-one, small and whole group instruction, and research.
- Flexibility and visual control of spaces within the cluster allows for constant monitoring and interaction of students and staff.





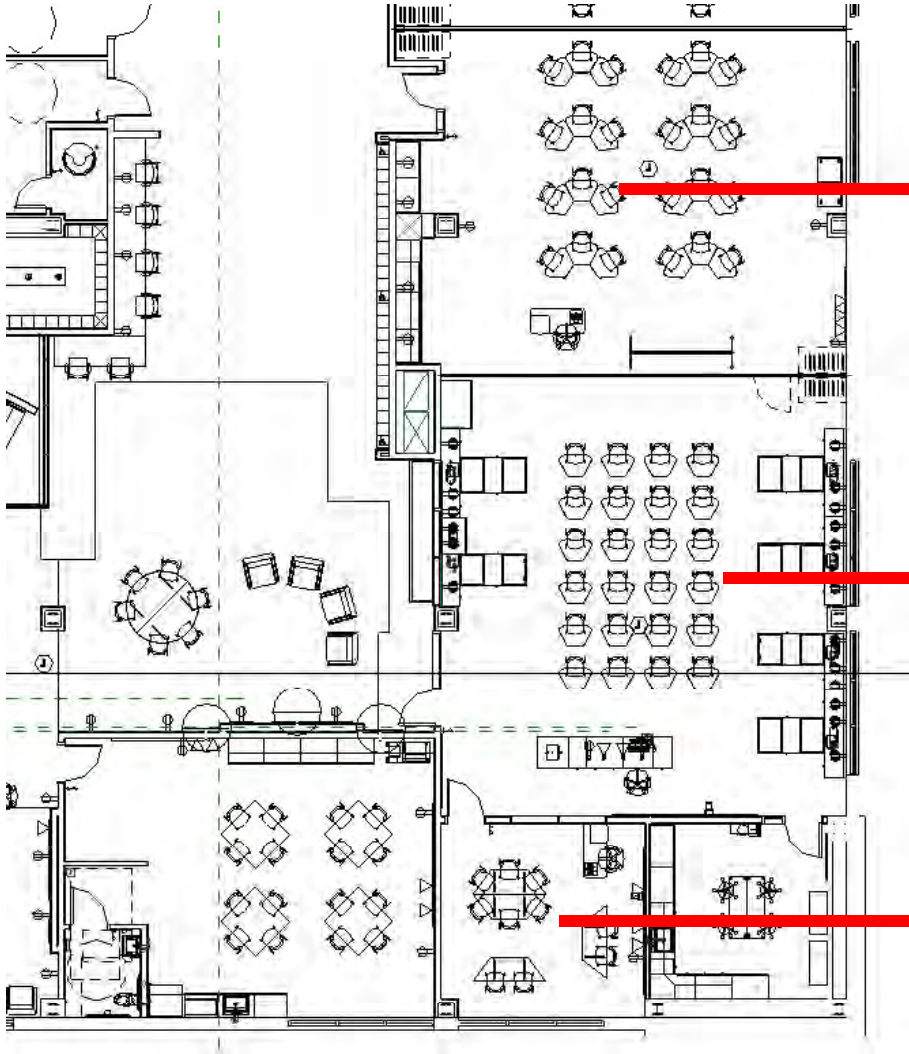
Academy of Sciences



Flex Classroom Design Concepts



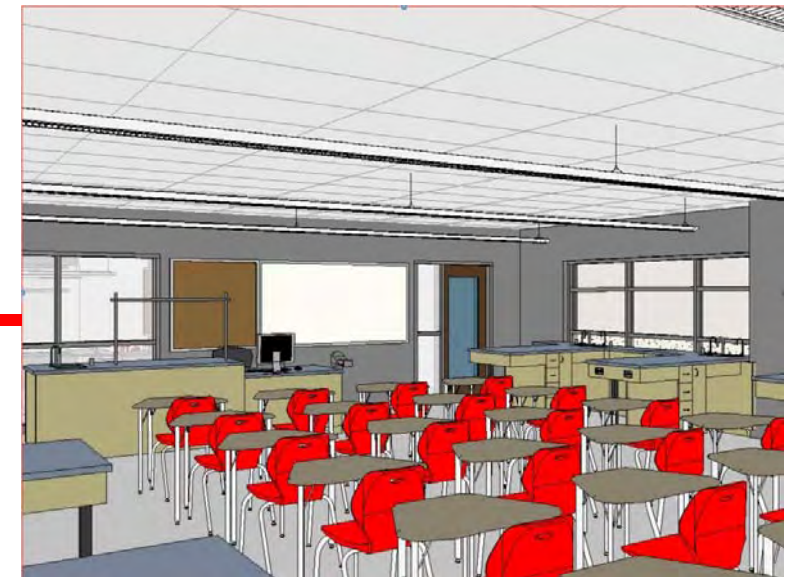
Academy of Sciences



Conceptual Classroom



Conceptual Small Group Room

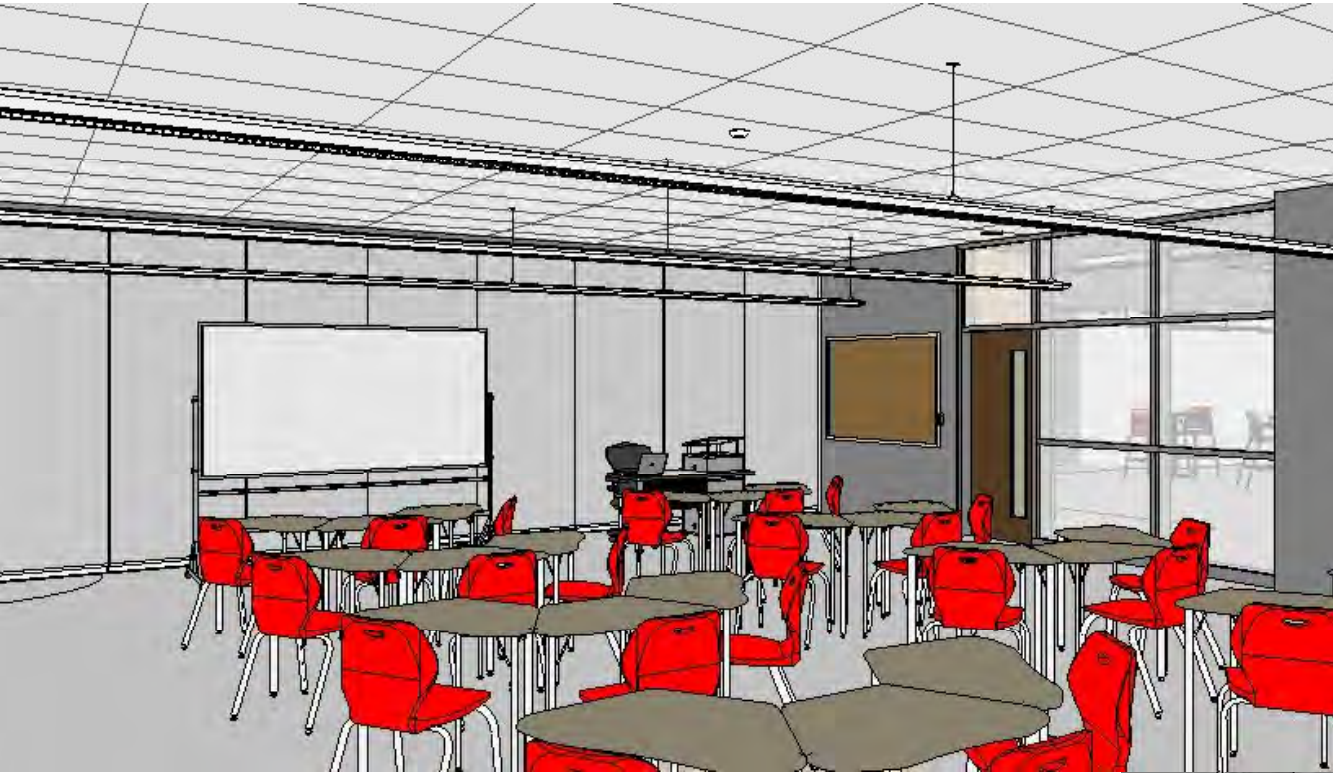


Conceptual Science Lab



Academy of Sciences

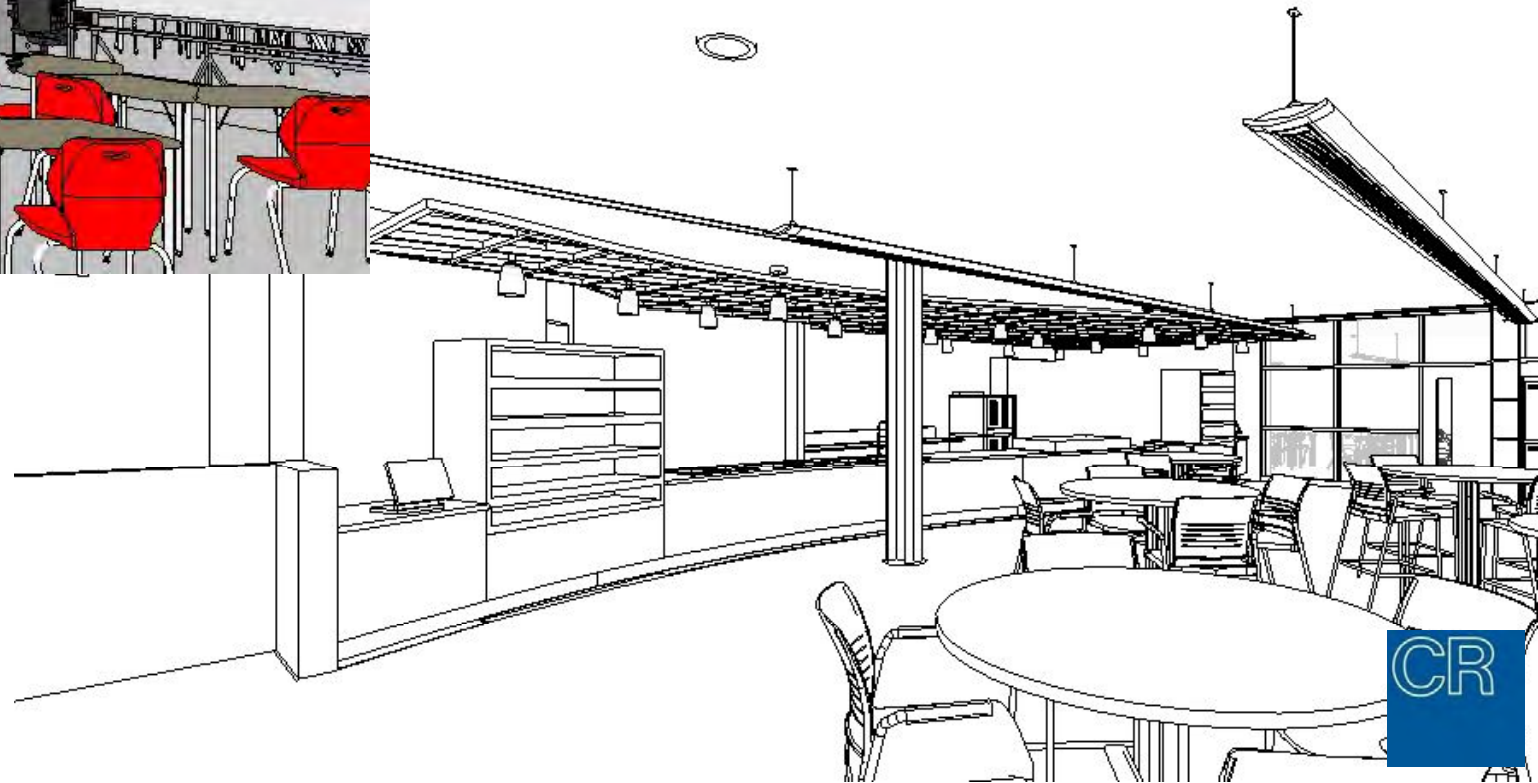
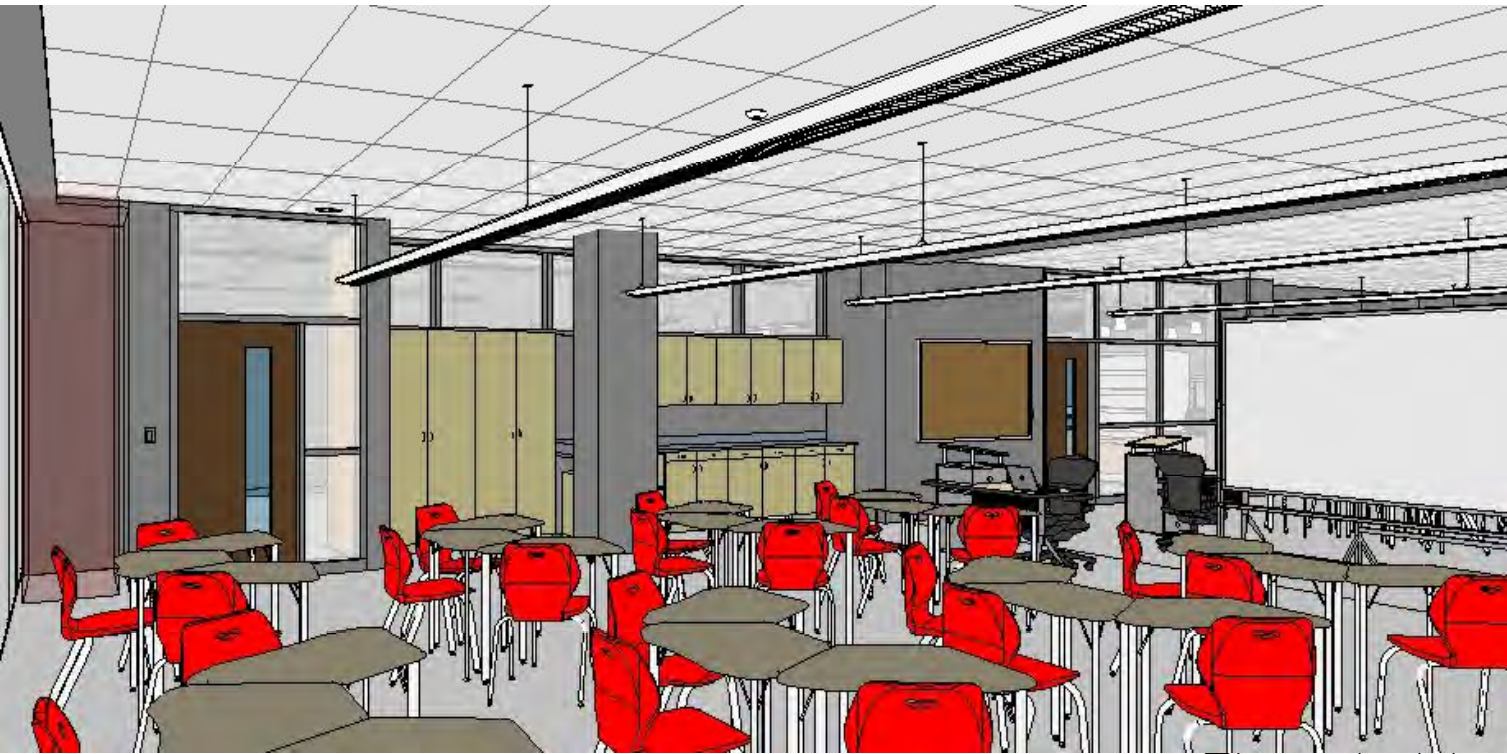
Current Design concepts: Various Screen Shots





Academy of Sciences

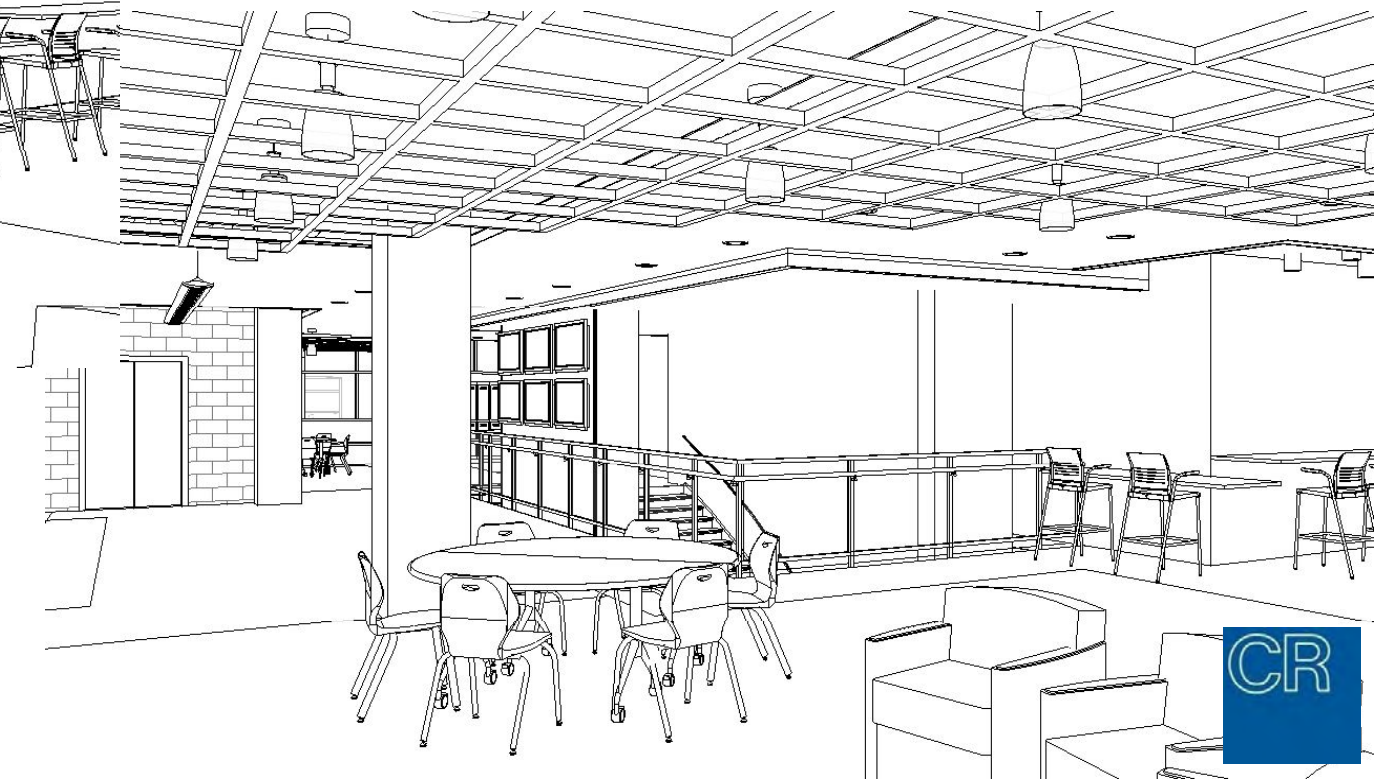
Current Design concepts: Various Screen Shots





Academy of Sciences

Current Design concepts: Various Screen Shots





Academy of Sciences

Current Design concepts: The Design process continues to evolve. Corridors contain large expanses of glass into the classrooms, allowing the natural light into the landlocked corridors.





HAZLETON AREA SCHOOL DISTRICT



Academy of Sciences

Current Design concepts: The Design process continues to evolve. Collaborative teaching and learning areas for small group brainstorming. Technology throughout the building provides for continuous connectivity and various learning opportunities.



Academy of Sciences

Cafeteria concept: A large open space with a very comfortable, relaxed, flexible seating arrangement. Monitors around the space that will display current news, weather, or current school projects. Café line with various grab and go items, both hot and cold.

